

PRINT

PLAN OVERVIEW

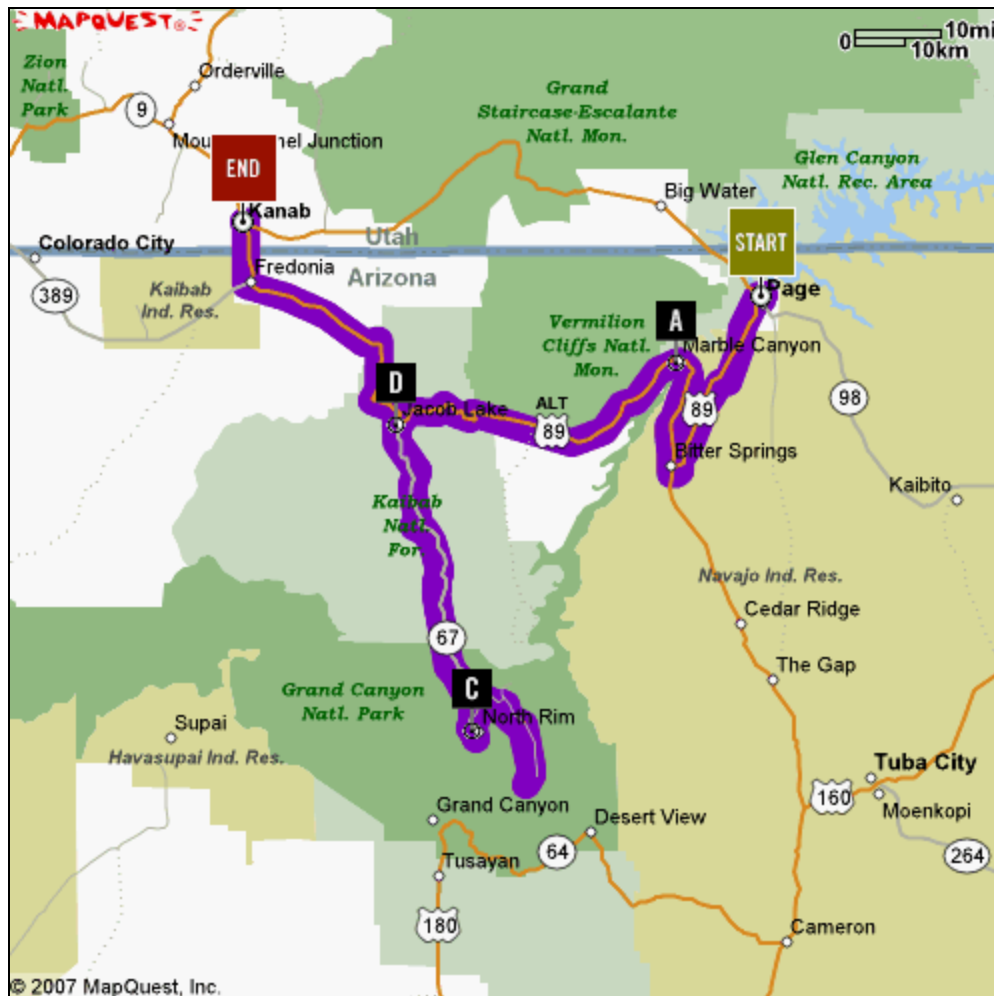
Canyon Day6

This plan is for a one way route.

Total distance: 245 miles

Total time: 5 hours 26 minutes at posted speed limits

OVERVIEW MAP



SEGMENT 1

Segment distance: 40 miles

Segment time at posted speed limit: 0 hours 48 minutes

FROM **Page B/W Arizonainn**
 [1300-1399] RIM VIEW DR
 PAGE, AZ 86040

START

TO **Marble Canyon, Arizona**
 Marble Canyon, AZ

A



Directions

- 1 Start out going SOUTH on RIM VIEW DR toward 13TH AVE.
- 2 RIM VIEW DR becomes 13TH AVE.
- 3 Turn RIGHT onto N NAVAJO DR.
- 4 Turn RIGHT onto VISTA AVE.
- 5 Turn RIGHT onto US-89 LOOP/N LAKE POWELL BLVD.
- 6 Turn LEFT onto US-89.
- 7 Turn RIGHT onto US-89 ALT.
- 8 Turn SLIGHT LEFT onto LODGE LOOP RD.

Distance

- 0.04 miles
- 0.09 miles
- 0.18 miles
- 0.44 miles
- 0.87 miles
- 24.47 miles
- 14.32 miles
- 0.1 miles

DEALERSHIPS

2. There are no Dealerships within **10.0 miles** of your route.

SEGMENT 2

Segment distance: 41 miles

Segment time at posted speed limit: 0 hours 55 minutes

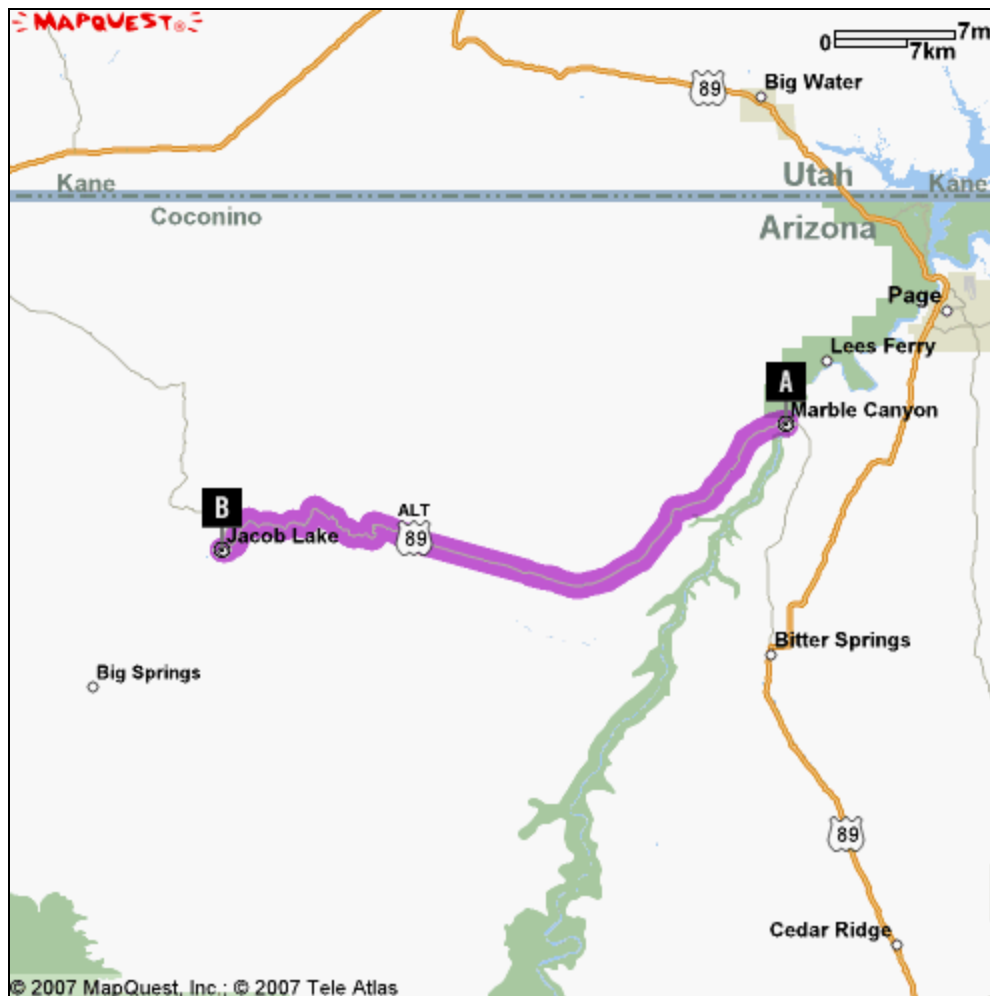
FROM Marble Canyon, Arizona

TO

Jacob Lake, Arizona

A Marble Canyon, AZ

B Jacob Lake, AZ



Directions

- 1 Start out going NORTHEAST on LODGE LOOP RD toward US-89 ALT.
- 2 Turn SHARP LEFT onto US-89 ALT.
- 3 Turn LEFT onto AZ-67/GRAND CANYON HWY.

Distance

- 0.1 miles
- 40.98 miles
- 0.03 miles

DEALERSHIPS

2. There are no Dealerships within **10.0 miles** of your route.

SEGMENT 3

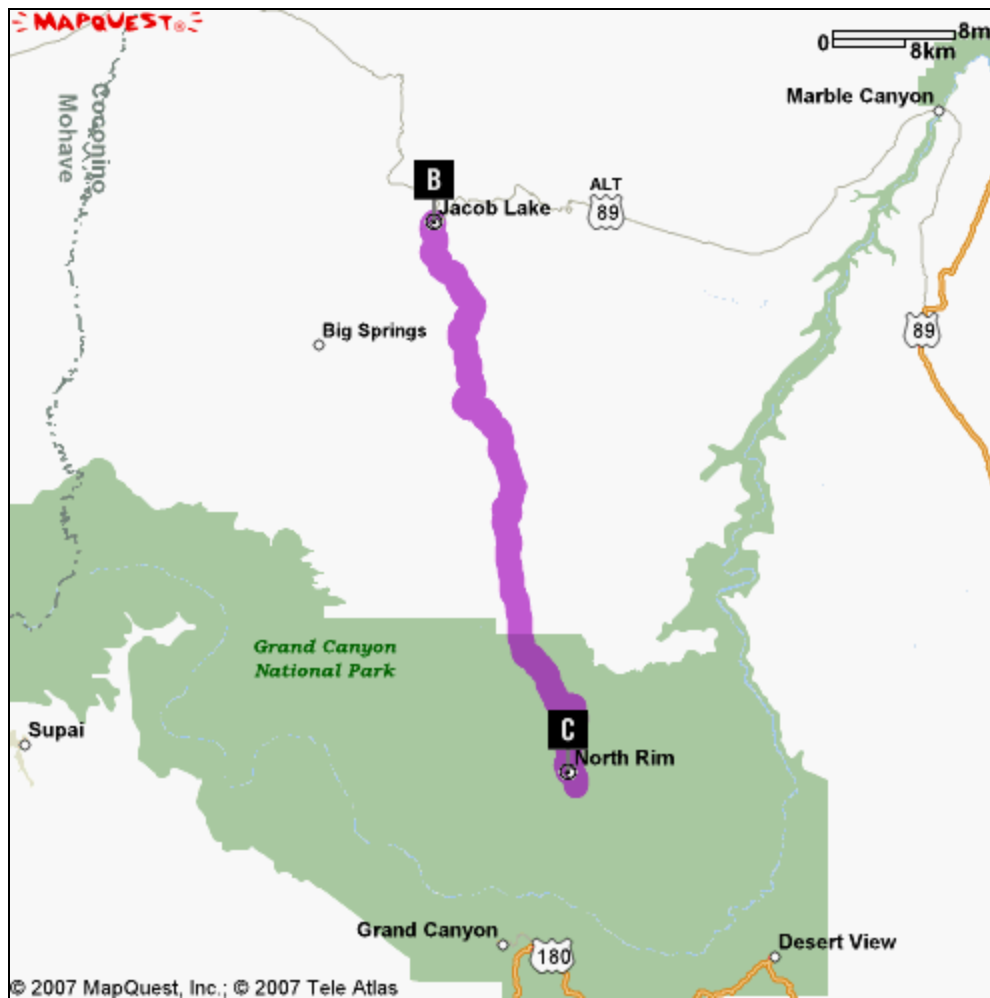
Segment distance: 45 miles
Segment time at posted speed limit: 1 hours 2 minutes

FROM **Jacob Lake, Arizona**

TO **North Rim, Arizona**

B Jacob Lake, AZ

C North Rim, AZ



Directions

- 1 Start out going SOUTH on AZ-67/GRAND CANYON HWY toward NF-461. Continue to follow AZ-67 S.
- 2 Start out going NORTH on AZ-67.
- 3 Turn LEFT.

Distance

- 43.72 miles
- 1.12 miles
- 0.24 miles

DEALERSHIPS

2. There are no Dealerships within **10.0 miles** of your route.

SEGMENT 4

Segment distance: 81 miles

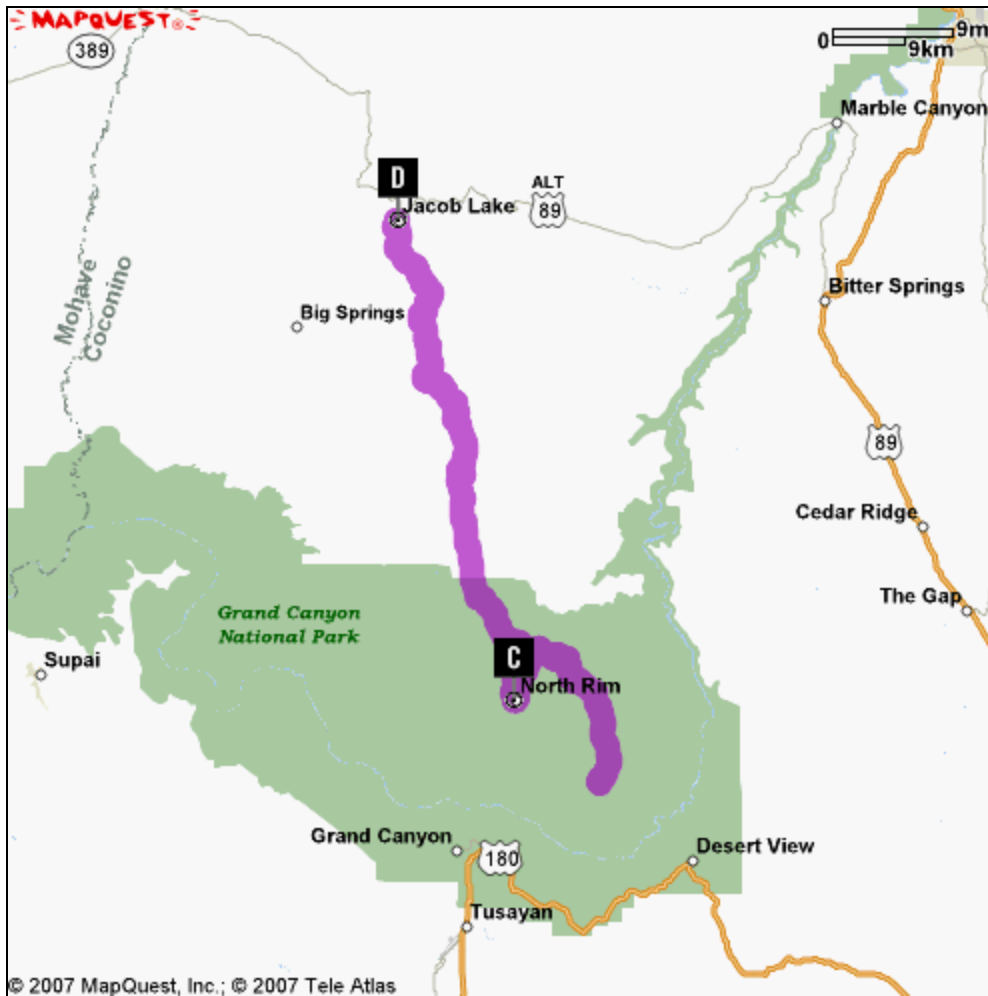
Segment time at posted speed limit: 1 hours 50 minutes

FROM North Rim, Arizona

TO Jacob Lake, Arizona

C North Rim, AZ

D Jacob Lake, AZ



Directions

- 1 Start out going NORTHEAST toward AZ-67.
- 2 Turn LEFT onto AZ-67.
- 3 Turn RIGHT.
- 4 Turn RIGHT.
- 5 Start out going NORTH.
- 6 Turn LEFT.
- 7 Turn RIGHT onto AZ-67 N.

Distance

- 0.24 miles
- 1.84 miles
- 5.42 miles
- 14.14 miles
- 14.14 miles
- 5.42 miles
- 40.76 miles

DEALERSHIPS

2. There are no Dealerships within **10.0 miles** of your route.

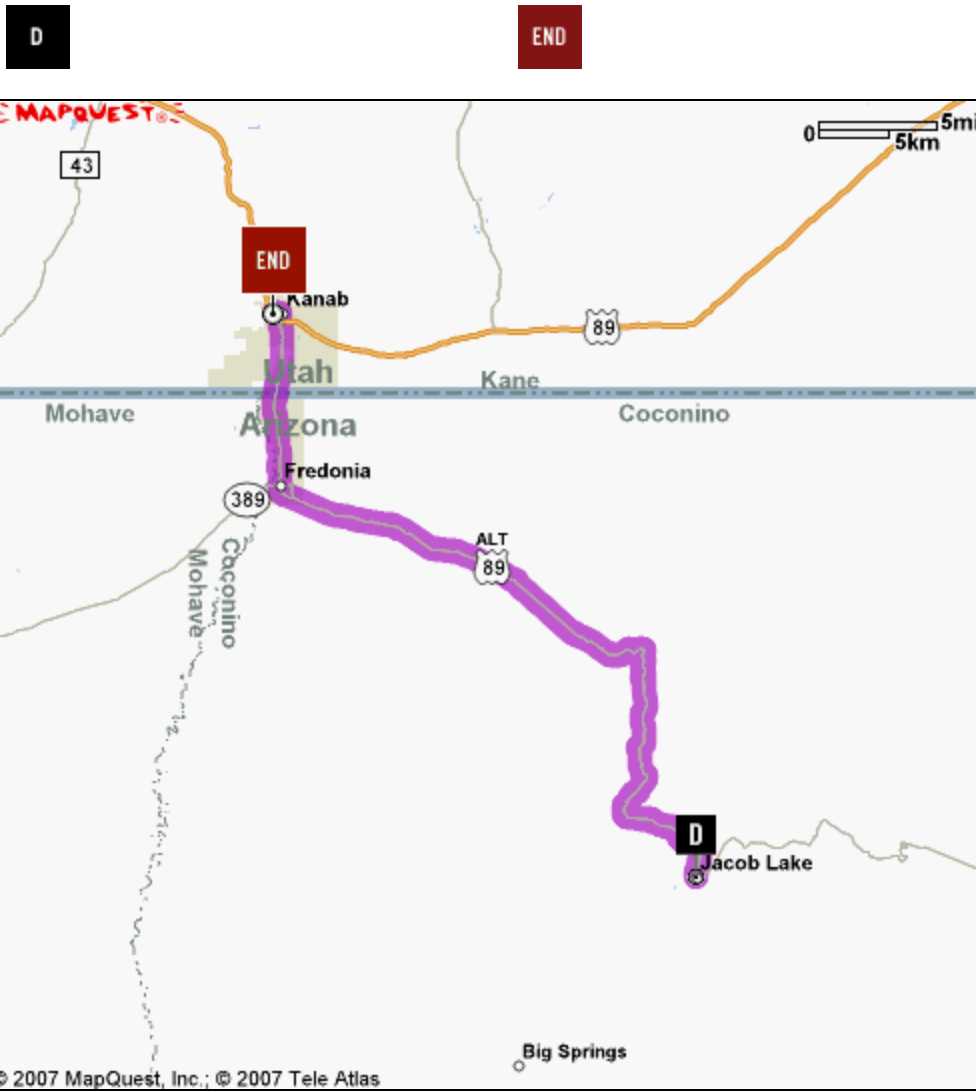
SEGMENT 5

Segment distance: 37 miles

Segment time at posted speed limit: 0 hours 51 minutes

FROM Jacob Lake, Arizona
Jacob Lake, AZ

TO Kanab B/W Red Hills
125 W CENTER ST
KANAB, UT 84741-3417



Directions

- 1 Start out going NORTHEAST on AZ-67/GRAND CANYON HWY toward US-89 ALT.
- 2 Turn LEFT onto US-89 ALT (Crossing into UTAH).
- 3 US-89 ALT becomes US-89.

Distance

- 0.03 miles
- 36.68 miles
- 0.6 miles

DEALERSHIPS

2. There are no Dealerships within **10.0 miles** of your route.

[PRINT](#)

[BACK TO TOP ▲](#)

These maps/directions are informational only. No representation is made or warranty given as to their content, road conditions or route usability or expeditiousness. User assumes all risk of use. MapQuest, Harley-Davidson Motor Co., and their suppliers assume no responsibility for any loss or delay resulting from such use.

* Estimated driving time is calculated using the posted speed limits along your route and does not include break times or stops.

© 2003-2007 H-D All rights reserved. [Legal Notice](#). [Privacy Policy](#). [We Care About You](#).