

PRINT

## PLAN OVERVIEW

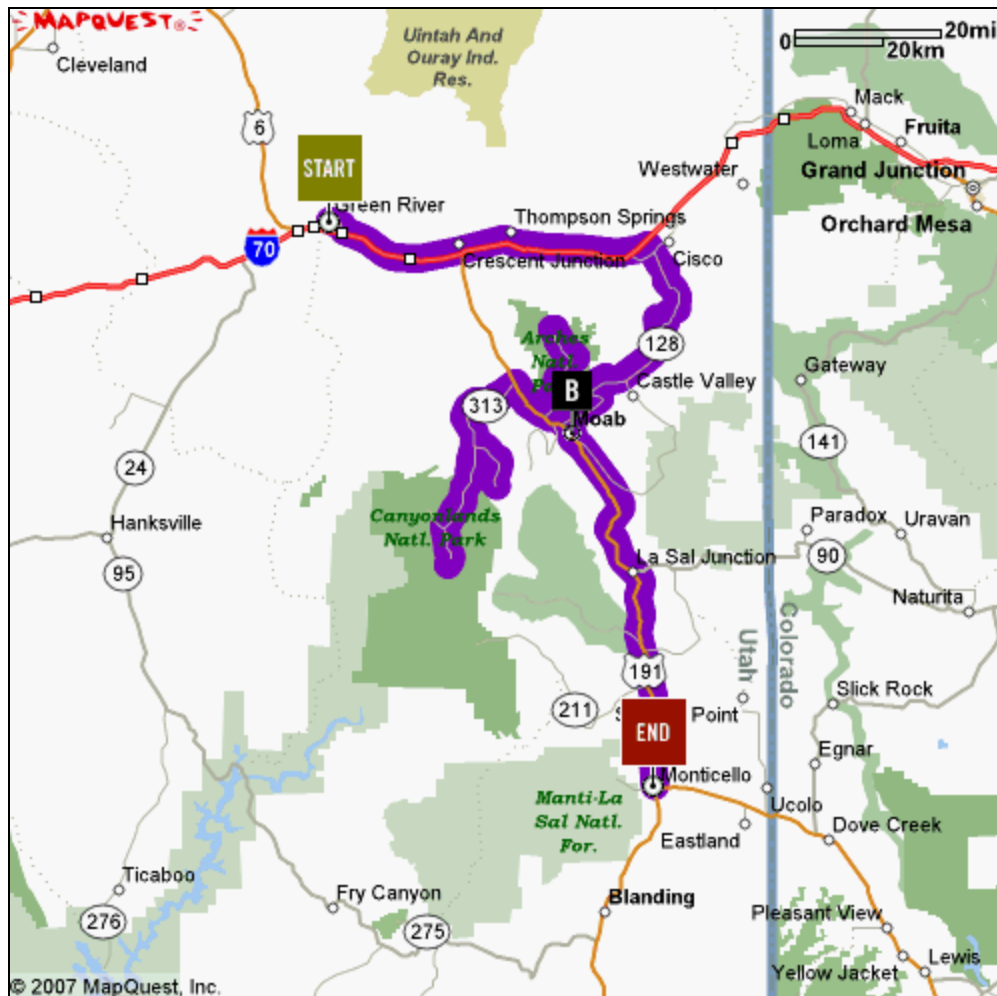
### Canyon Day4

This plan is for a one way route.

**Total distance:** 284 miles

**Total time:** 7 hours 41 minutes at posted speed limits

### OVERVIEW MAP



### SEGMENT 1

**Segment distance:** 89 miles

**Segment time at posted speed limit:** 1 hours 59 minutes

|                                 |   |                           |                                       |
|---------------------------------|---|---------------------------|---------------------------------------|
| <p>FROM</p> <p><b>START</b></p> | <p><b>Green River B/W River Terrace</b><br/>880 E MAIN ST<br/>GREEN RIVER, UT 84540</p> | <p>TO</p> <p><b>A</b></p> | <p><b>Moab, Utah</b><br/>Moab, UT</p> |
|---------------------------------|---|---------------------------|---------------------------------------|



**Directions**

- 1 Start out going SOUTHEAST on MAIN ST/I-70 BL/UT-19 toward 480 EAST ST/ROSS ST.
- 2 Merge onto I-70 E/US-50 E/US-6 E via the ramp on the LEFT toward CRESCENT JCT..
- 3 Take the UT-128 exit, EXIT 204, toward CISCO.
- 4 Turn RIGHT onto US-6 BR/UT-128.
- 5 Turn RIGHT onto UT-128.
- 6 Start out going SOUTHWEST on UT-128 toward FISHER TOWER RD.
- 7 Turn LEFT onto US-191.
- 8 Turn LEFT onto E CENTER ST.

**Distance**

- 2.46 miles
- 39.81 miles
- 0.39 miles
- 2.9 miles
- 14.75 miles
- 26.85 miles
- 2.48 miles
- 0.09 miles

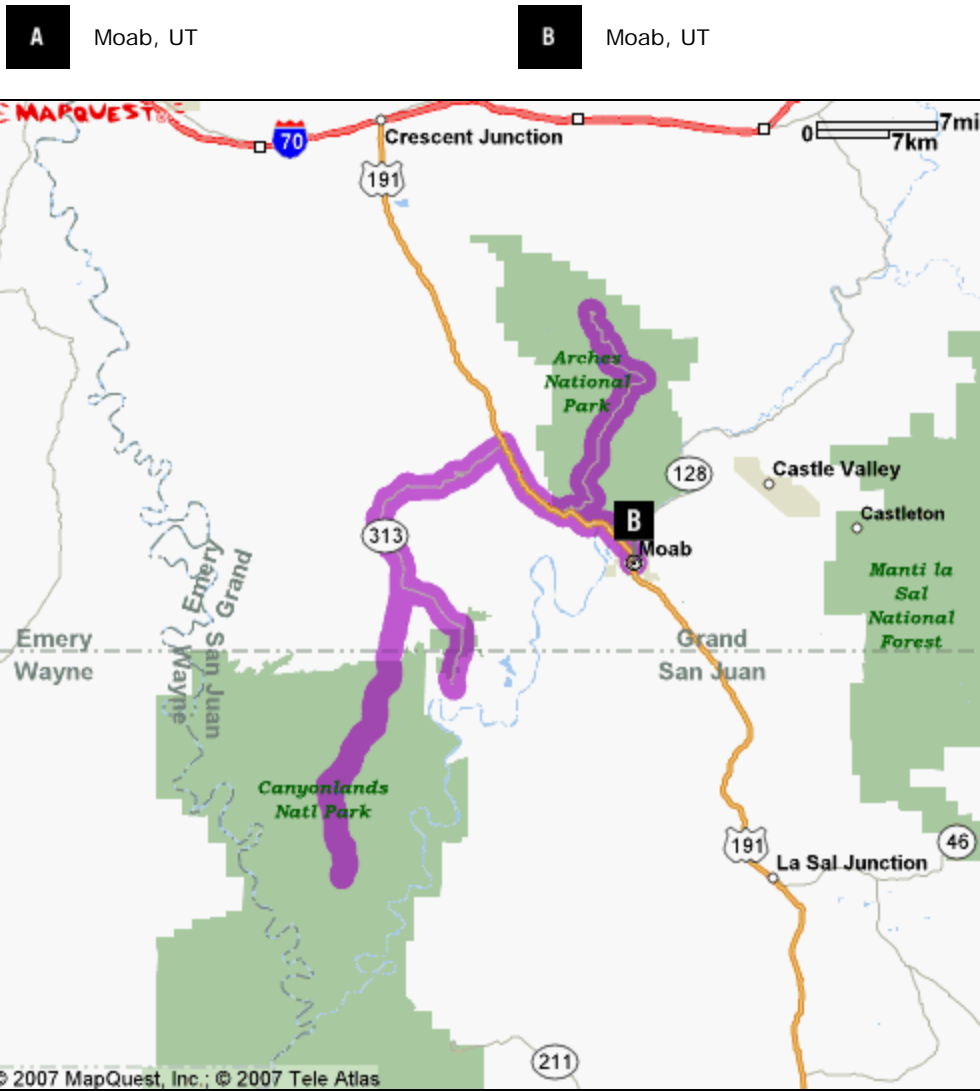
**DEALERSHIPS**

2. There are no Dealerships within **10.0 miles** of your route.

**SEGMENT 2**

**Segment distance:** 140 miles  
**Segment time at posted speed limit:** 4 hours 49 minutes

FROM **Moab, Utah** TO **Moab, Utah**



**Directions**

**Distance**

- |  |             |
|--|-------------|
| 1 Start out going WEST on E CENTER ST toward S MAIN ST/US-191. | 0.09 miles  |
| 2 Turn RIGHT onto N MAIN ST/US-191. Continue to follow US-191. | 5.11 miles  |
| 3 Turn RIGHT onto ARCHES ENTRANCE RD.                          | 2.44 miles  |
| 4 Turn SLIGHT RIGHT.   | 0.06 miles  |
| 5 Turn SLIGHT RIGHT onto ARCHES ENTRANCE RD.                   | 15.11 miles |
| 6 Turn SLIGHT LEFT.  | 0.37 miles  |
| 7 Start out going SOUTHWEST toward ARCHES ENTRANCE RD.         | 0.24 miles  |
| 8 Turn SLIGHT RIGHT onto ARCHES ENTRANCE RD.                   | 14.93 miles |
| 9 Turn SLIGHT RIGHT onto PARK AVE.                             | 0.08 miles  |
| 10 Turn SLIGHT RIGHT onto ARCHES ENTRANCE RD.                  | 2.44 miles  |
| 11 Turn RIGHT onto US-191.                                     | 5.92 miles  |
| 12 Turn LEFT onto UT-313.                                      | 14.59 miles |

|   |             |
|---|-------------|
| 13 Turn LEFT to stay on UT-313.                                     | 7.94 miles  |
| 14 Start out going NORTHWEST on UT-313 toward RESIDENTIAL RD.       | 7.96 miles  |
| 15 Turn LEFT onto NECK RD.  | 3.72 miles  |
| 16 NECK RD becomes SOUTH FORK RD (Portions unpaved).                | 2.13 miles  |
| 17 Stay STRAIGHT to go onto GRAND VIEW POINT RD (Portions unpaved). | 7.3 miles   |
| 18 GRAND VIEW POINT RD becomes unnamed road (Portions unpaved).     | 5.76 miles  |
| 19 Turn LEFT.   | 0.09 miles  |
| 20 Start out going NORTHEAST.                                       | 0.09 miles  |
| 21 Turn RIGHT (Portions unpaved).                                   | 5.76 miles  |
| 22 Stay STRAIGHT to go onto GRAND VIEW POINT RD (Portions unpaved). | 7.3 miles   |
| 23 GRAND VIEW POINT RD becomes SOUTH FORK RD (Portions unpaved).    | 2.13 miles  |
| 24 SOUTH FORK RD becomes NECK RD.                                   | 3.72 miles  |
| 25 NECK RD becomes UT-313.  | 14.59 miles |
| 26 Turn RIGHT onto US-191.  | 11.04 miles |
| 27 Turn LEFT onto E CENTER ST.                                      | 0.09 miles  |

### DEALERSHIPS

---

2. There are no Dealerships within **10.0 miles** of your route.

### SEGMENT 3

---

**Segment distance:** 54 miles

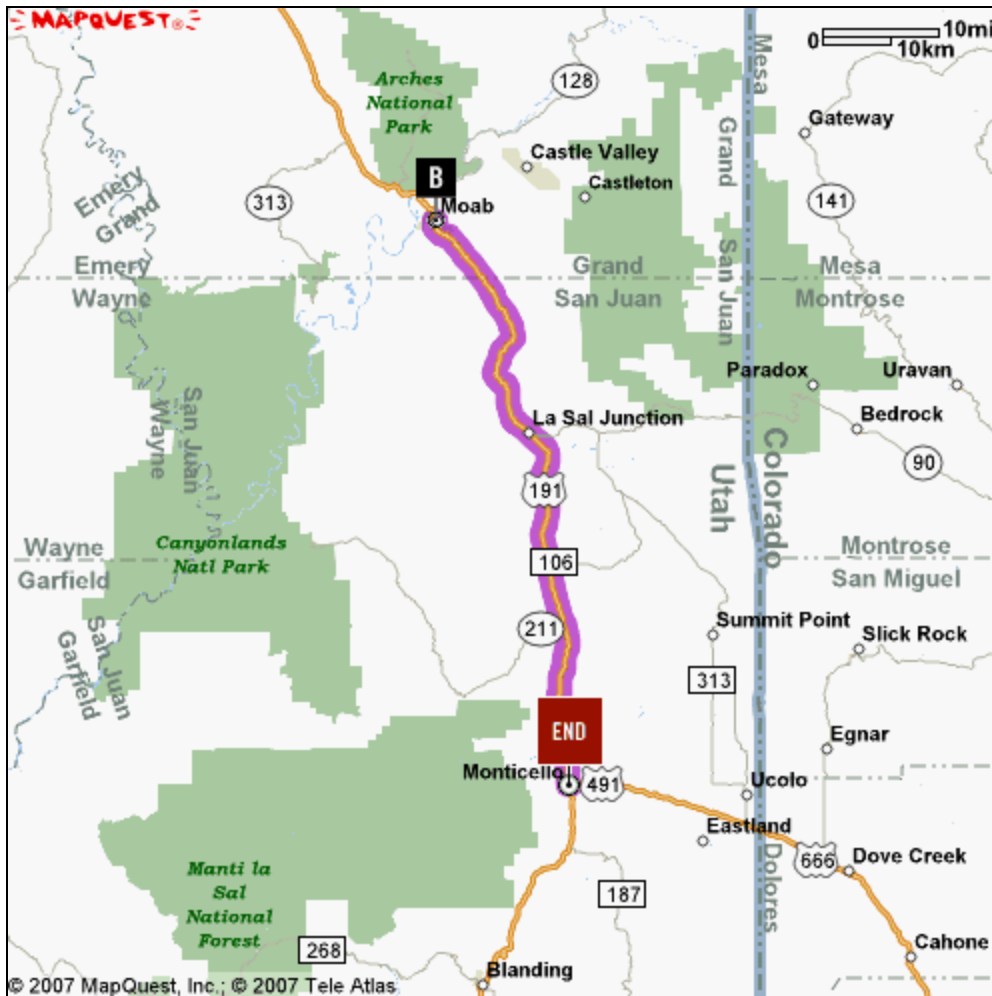
**Segment time at posted speed limit:** 0 hours 53 minutes

**FROM Moab, Utah**

**B** Moab, UT

**TO Monticello B/W Wayside Motor Inn**

**END** MONTICELLO, UT 84535



**Directions**

**Distance**

- |  |             |
|--|-------------|
| 1 Start out going WEST on E CENTER ST toward N MAIN ST/US-191. | 0.09 miles  |
| 2 Turn LEFT onto S MAIN ST/US-191. Continue to follow US-191.  | 53.98 miles |
| 3 Turn LEFT onto CENTRAL ST/US-491/US-666.                     | 0.2 miles   |

**DEALERSHIPS**

2. There are no Dealerships within **10.0 miles** of your route.

**PRINT**

**BACK TO TOP ▲**

These maps/directions are informational only. No representation is made or warranty given as to their content, road conditions or route usability or expeditiousness. User assumes all risk of use. MapQuest, Harley-Davidson Motor Co., and their suppliers assume no responsibility for any loss or delay resulting from such use.

\* Estimated driving time is calculated using the posted speed limits along your route and does not include break times or stops.

© 2003-2007 H-D All rights reserved. [Legal Notice](#). [Privacy Policy](#). [We Care About You](#).