

PRINT

## PLAN OVERVIEW

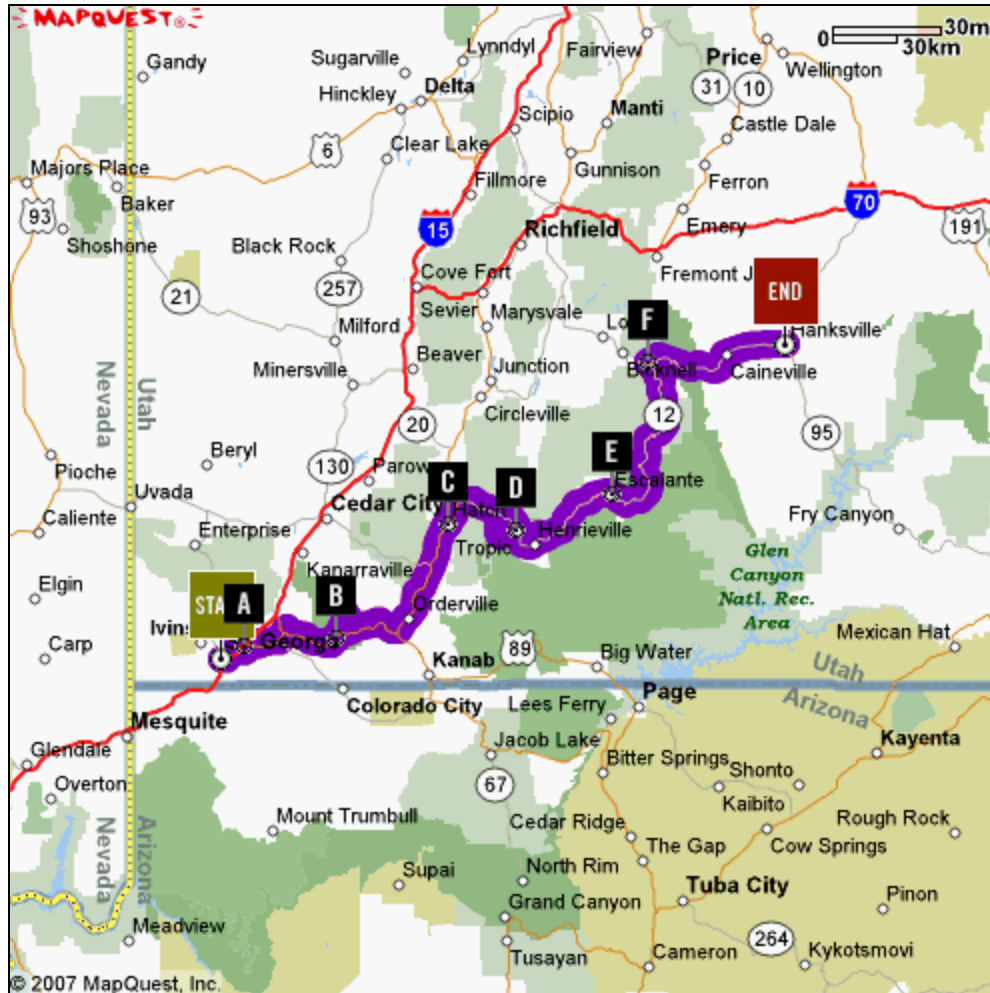
### Canyon Day3a

This plan is for a one way route.

**Total distance:** 318 miles

**Total time:** 7 hours 17 minutes at posted speed limits

### OVERVIEW MAP



### SEGMENT 1

**Segment distance:** 18 miles

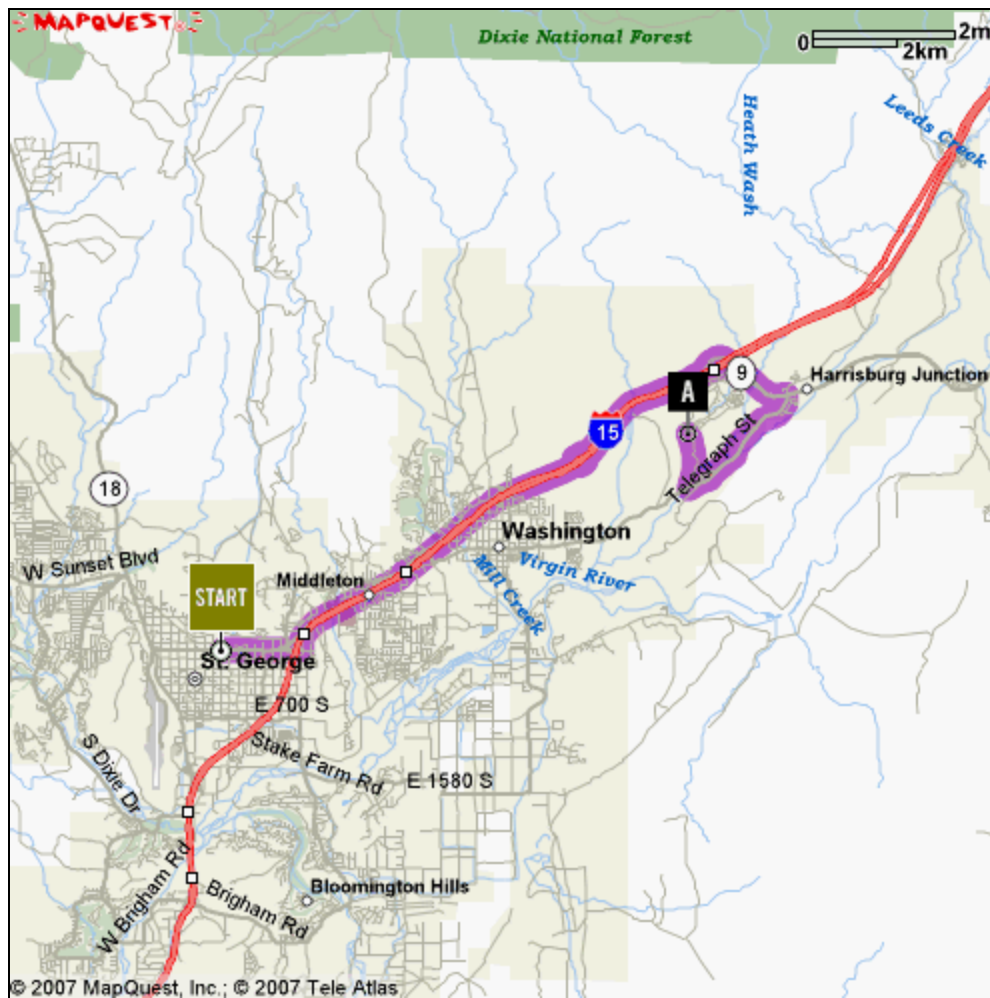
**Segment time at posted speed limit:** 0 hours 22 minutes

FROM **Saint George B/W Travel Inn**  
 316 E SAINT GEORGE BLVD  
 SAINT GEORGE, UT 84770-2955

START

TO **Zion Harley-Davidson Shop**  
 2345 N Coral Canyon Blvd.  
 Washington, UT 84780

A



**Directions**

- 1 Start out going EAST on E ST GEORGE BLVD/I-15 BL/UT-34 toward N 400 E. Continue to follow E ST GEORGE BLVD/UT-34.
- 2 Merge onto I-15 N via the ramp on the LEFT toward SALT LAKE.
- 3 Take the UT-9 exit, EXIT 16, toward HURRICANE/ZION NATL. PARK.
- 4 Merge onto UT-9/W STATE ST toward HURRICANE.
- 5 Start out going NORTHWEST on UT-9/W STATE ST. Continue to follow UT-9.
- 6 Merge onto I-15 S.
- 7 Take the WASHINGTON PKY exit, EXIT 13.
- 8 Turn LEFT onto WASHINGTON PKWY.
- 9 Merge onto I-15 N via the ramp on the LEFT toward SALT LAKE CITY.
- 10 Start out going NORTH on I-15 N.
- 11 Take the UT-9 exit, EXIT 16, toward HURRICANE/ZION NATL. PARK.
- 12 Merge onto UT-9/W STATE ST toward HURRICANE.
- 13 Turn RIGHT onto UT-212/6300 W/TELEGRAPH ST. Continue to follow UT-212.
- 14 Turn RIGHT onto CORAL CANYON RD.

**Distance**

- 1.11 miles
- 7.05 miles
- 0.17 miles
- 0.39 miles
- 0.54 miles
- 2.14 miles
- 0.31 miles
- 0.13 miles
- 2.29 miles
- 0.05 miles
- 0.17 miles
- 0.97 miles
- 1.95 miles
- 0.4 miles

15 CORAL CANYON RD becomes N CORAL CANYON BLVD.

0.38 miles

### STOP DETAILS

**A** **Zion Harley-Davidson Shop**  
2345 N Coral Canyon Blvd.  
Washington, UT 84780



### SEGMENT 2

**Segment distance:** 33 miles

**Segment time at posted speed limit:** 0 hours 40 minutes

**FROM** **Zion Harley-Davidson Shop**  
2345 N Coral Canyon Blvd.  
**A** Washington, UT 84780

**TO** **Springdale, Utah**  
**B** Springdale, UT



**Directions**

- 1 Start out going SOUTH on N CORAL CANYON BLVD toward CORAL CANYON RD.
- 2 N CORAL CANYON BLVD becomes CORAL CANYON RD.
- 3 Turn LEFT onto UT-212.
- 4 Turn RIGHT onto UT-9/W STATE ST.
- 5 Turn SLIGHT RIGHT onto UT-9/W 500 ST N. Continue to follow UT-9.
- 6 Turn LEFT onto WINDERLAND DR.

**Distance**

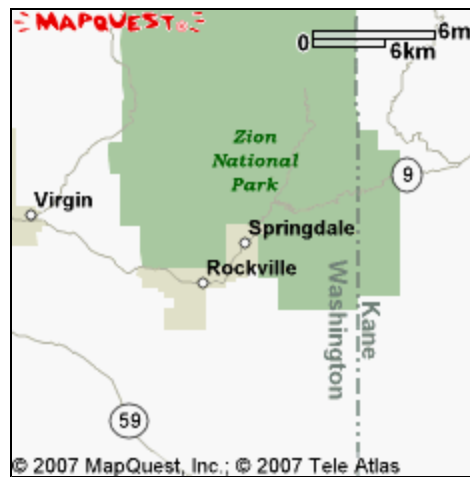
- 0.38 miles
- 0.4 miles
- 1.95 miles
- 11.31 miles
- 19.14 miles
- 0.01 miles

**STOP DETAILS**



**Springdale, Utah**

Springdale, UT



**SEGMENT 3**

Segment distance: 73 miles

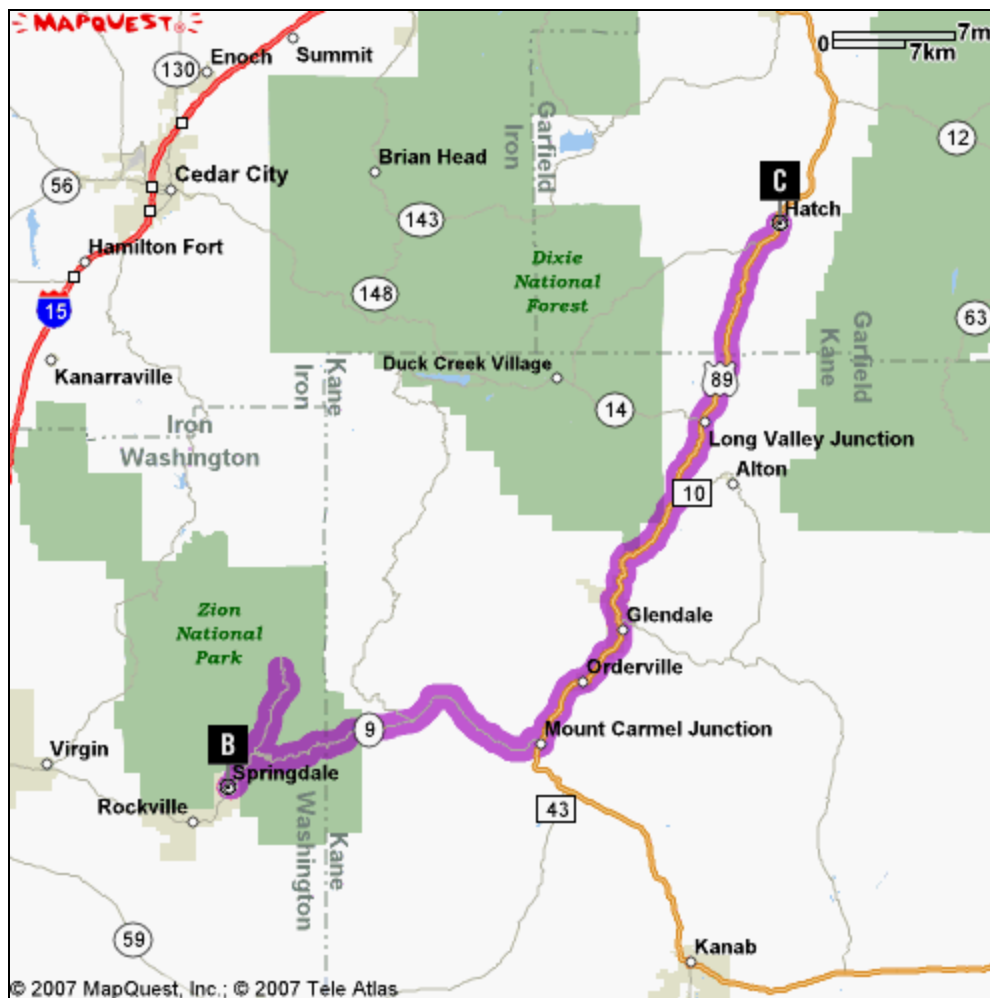
Segment time at posted speed limit: 1 hours 37 minutes

FROM **Springdale, Utah**

TO **Hatch, Utah**

**B** Springdale, UT

**C** Hatch, UT



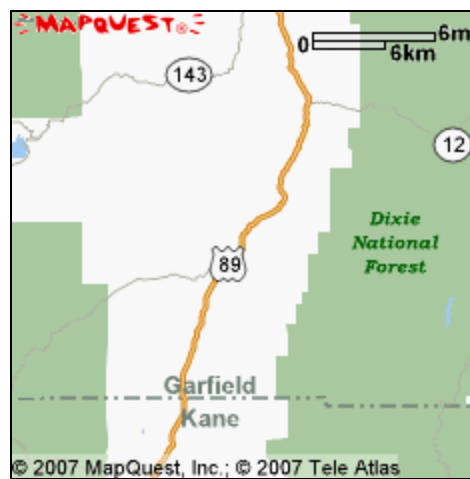
Directions

Distance

- 1 Start out going SOUTH on WINDERLAND DR toward UT-9/ZION PARK BLVD. 0.01 miles
- 2 Turn LEFT onto UT-9/ZION PARK BLVD. Continue to follow UT-9. 2.65 miles
- 3 Turn LEFT onto ZION CANYON RD. 6.12 miles
- 4 Turn SLIGHT RIGHT to stay on ZION CANYON RD. 0.07 miles
- 5 Start out going SOUTH on ZION CANYON RD toward FLOOR OF THE VALLEY RD/ZION CANYON SCENIC DR. 6.2 miles
- 6 Turn LEFT onto ZION MOUNT CARMEL HWY/UT-9. Continue to follow UT-9. 22.9 miles
- 7 Turn LEFT onto US-89/S STATE ST. Continue to follow US-89. 35.01 miles
- 8 Turn RIGHT onto E CENTER ST/00 NORTH SOUTH ST. 0.04 miles

**STOP DETAILS**

**C** Hatch, Utah  
Hatch, UT



**SEGMENT 4**

**Segment distance:** 43 miles  
**Segment time at posted speed limit:** 1 hours 11 minutes

**FROM Hatch, Utah**  
**C** Hatch, UT

**TO Tropic, Utah**  
**D** Tropic, UT



**Directions**

- 1 Start out going WEST on E CENTER ST/00 NORTH SOUTH ST toward S MAIN ST/US-89.
- 2 Turn RIGHT onto N MAIN ST/US-89. Continue to follow US-89.
- 3 Turn SLIGHT RIGHT onto UT-12.
- 4 Turn SLIGHT RIGHT onto UT-63.
- 5 Turn SLIGHT LEFT onto BRYCE POINT RD.
- 6 Turn SLIGHT LEFT.
- 7 Start out going SOUTHWEST toward BRYCE POINT RD.
- 8 Turn SLIGHT RIGHT onto BRYCE POINT RD.
- 9 Turn SLIGHT RIGHT onto UT-63.
- 10 Turn RIGHT onto UT-12.
- 11 Turn LEFT onto E BRYCE WAY/E 100 N.

**Distance**

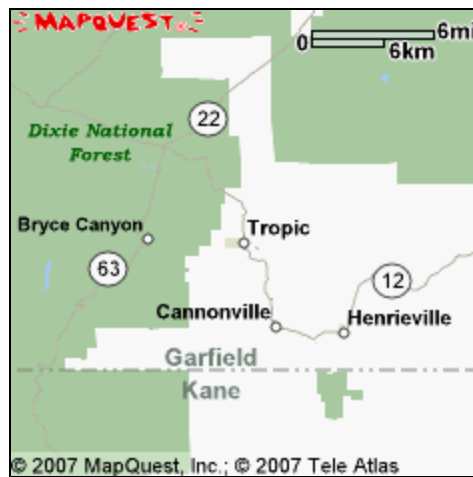
- 0.04 miles
- 8.14 miles
- 13.6 miles
- 5.45 miles
- 1.33 miles
- 0.53 miles
- 0.53 miles
- 1.33 miles
- 5.41 miles
- 7.43 miles
- 0.02 miles

**STOP DETAILS**



**Tropic, Utah**

Tropic, UT



**SEGMENT 5**

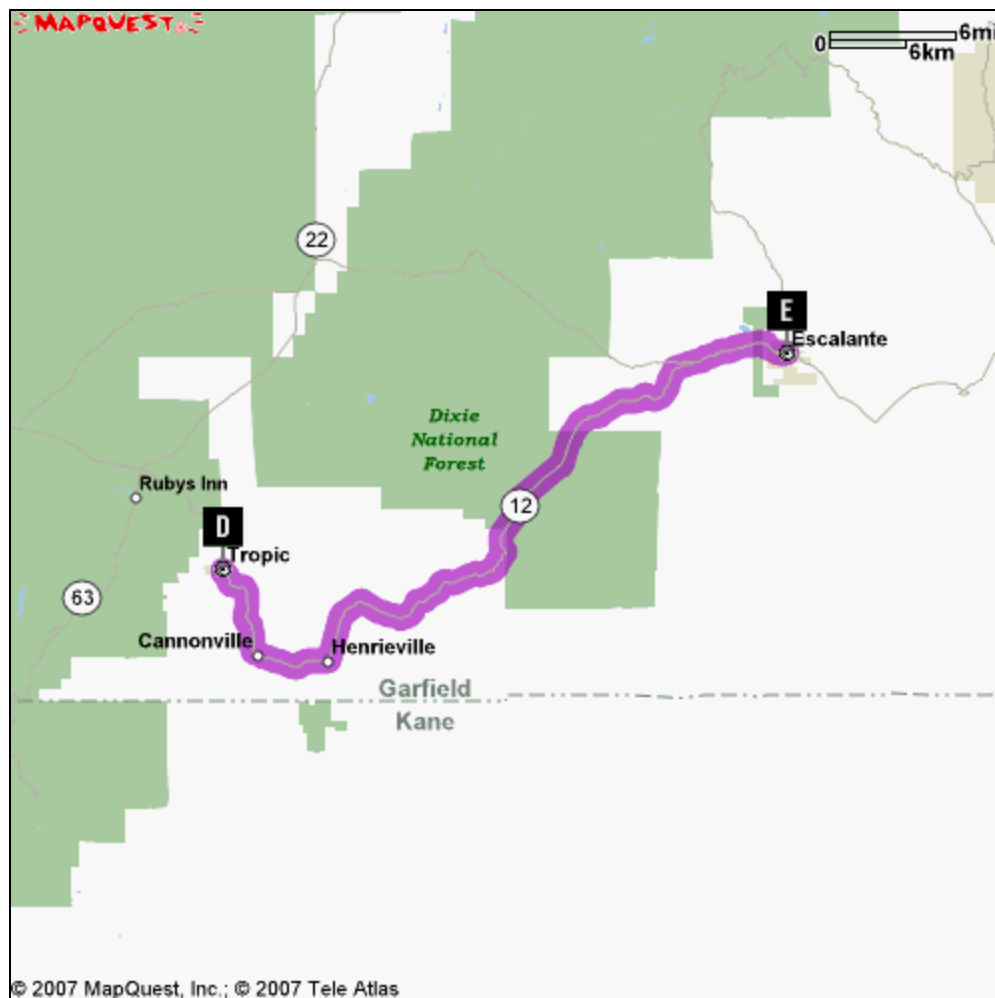
Segment distance: 38 miles  
Segment time at posted speed limit: 0 hours 56 minutes

FROM **Tropic, Utah**

TO **Escalante, Utah**

**D** Tropic, UT

**E** Escalante, UT



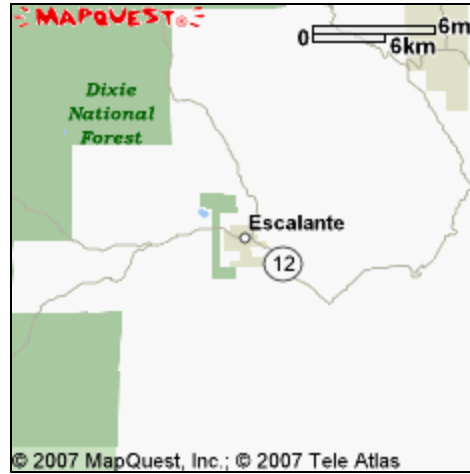
Directions

Distance

- 1 Start out going WEST on E BRYCE WAY/E 100 N toward N MAIN ST/UT-12. 0.02 miles
- 2 Turn LEFT onto N MAIN ST/UT-12. Continue to follow UT-12. 38.6 miles

**STOP DETAILS**

**E** Escalante, Utah  
Escalante, UT

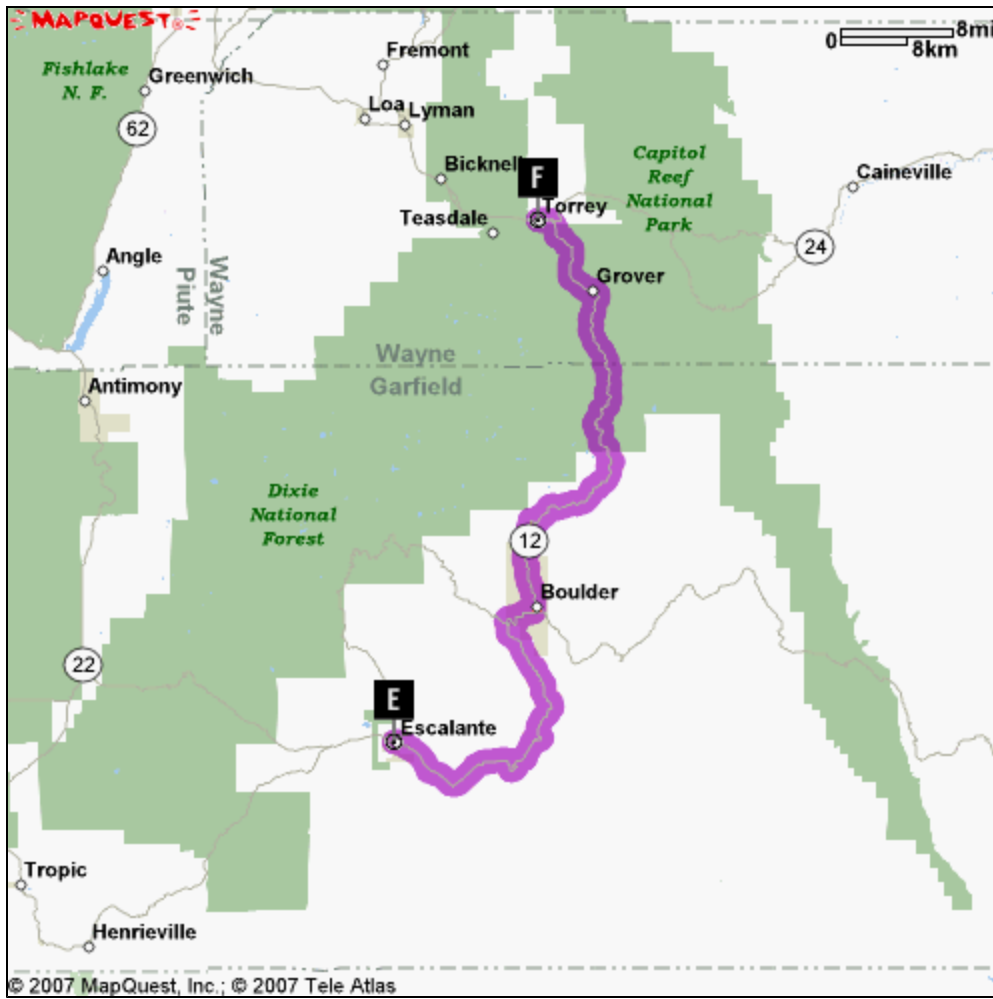


**SEGMENT 6**

**Segment distance:** 64 miles  
**Segment time at posted speed limit:** 1 hours 27 minutes

**FROM Escalante, Utah**  
**E** Escalante, UT

**TO Torrey, Utah**  
**F** Torrey, UT



**Directions**

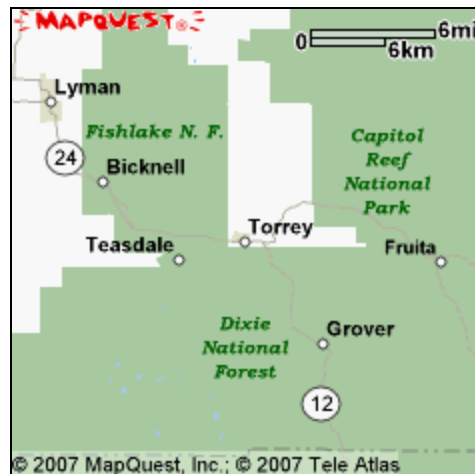
- 1 Start out going NORTH on W MAIN ST/UT-12 toward S CENTER ST. Continue to follow UT-12.
- 2 Turn LEFT onto UT-24/E MAIN ST.

**Distance**

- 63.7 miles
- 0.88 miles

**STOP DETAILS**

- F** Torrey, Utah  
Torrey, UT



**SEGMENT 7**

Segment distance: 47 miles  
Segment time at posted speed limit: 1 hours 4 minutes

FROM **Torrey, Utah**

TO **Hanksville, Utah**

**F** Torrey, UT

**END** Hanksville, UT



**Directions**

- 1 Start out going EAST on UT-24/E MAIN ST toward 200 ST E. Continue to follow UT-24.
- 2 Turn RIGHT onto CENTER ST.
- 3 Turn LEFT onto MAIN ST.

**Distance**

- 47.49 miles
- 0.11 miles
- 0.07 miles

**PRINT**

**BACK TO TOP ▲**

These maps/directions are informational only. No representation is made or warranty given as to their content, road conditions or route usability or expeditiousness. User assumes all risk of use. MapQuest, Harley-Davidson Motor Co., and their suppliers assume no responsibility for any loss or delay resulting from such use.

\* Estimated driving time is calculated using the posted speed limits along your route and does not include break times or stops.

© 2003-2007 H-D All rights reserved. [Legal Notice](#). [Privacy Policy](#). [We Care About You](#).